

RADIO DESIGN

HANDBOOK OF CONSTRUCTION FOR STUDENTS & SET BUILDERS

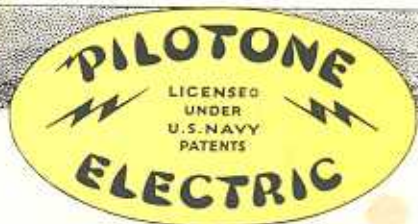


Pilotone Electric Receiver — Television —
Audio Frequency Transformers — Power
Amplifiers — Modern Power Supply Units —
Hail to the Graf Zeppelin — The Radio Beacon

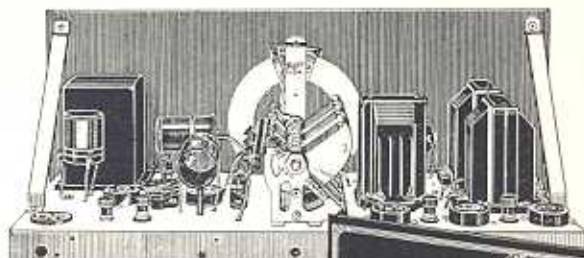
The SG-105 Screen Grid Regenerative Receiver
Six Tube TRF Receiver with ABC Power Supply

*June 4th 1929.
Gunn, Adams, Cleveland*

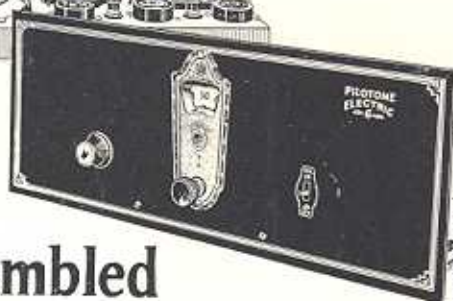




Here's the A-C Kit you've been waiting for!



Above—"The Works" showing built-in "A" Power.
At Right—Front Panel, beautiful in its single control simplicity. Standard size 7" x 18" fits all cabinets and consoles.



CUSTOM-SET BUILDERS

As rapidly as manufacturing permits, stores are being supplied. If your local store cannot supply you, write us direct and we will see that you are taken care of.



Use this Pilotone "B" Eliminator No. K-107 (designed especially for this receiver) or Pilot "B" Pack No. 5, or any other standard battery eliminator.



Can be assembled
for less than \$27⁰⁰

Including Built-in "A" Power

PILOTONE "B" POWER
SUPPLY EXTRA

Think of it! A 6-tube all-electric receiver with features found only in the most expensive factory made sets . . . at a price that seems unbelievable . . . all because the Pilotone Kit is produced by the World's largest Radio Parts Plant! All-metal construction insures greatest accuracy, ease of construction and professional appearance.

Features!

- Latest commercial-type all-metal construction.
- All holes stamped—no drilling!
- Single control, illuminated Dial.
- No batteries—all electric A-C operation with built-in "A" power.
- Uses all standard A-C tubes which are correctly biased, giving highest quality reproduction.
- New compensated triple gang tuning condenser.
- Latest push-pull amplification.
- Simplified construction means simplified assembly.
- Full size construction Blue Prints furnished.
- Licensed under U. S. Navy Patents.

PILOT ELECTRIC MFG. CO.
325 BERRY ST. BROOKLYN, N.Y. INC.
TRADE MARK REGISTERED
"WORLD'S LARGEST RADIO PARTS PLANT"

RADIO DESIGN BLUE PRINTS

BP-101

Full Size Assembly and Wiring Blue Print for Short Wave Wasp Receiver. (Parts Kit K-101.)

BP-102

Full Size Assembly and Wiring Blue Print for Six Tube Pilotone Electric TRF Receiver. (Parts Kit K-102.)

BP-103

Full Size Assembly and Wiring Blue Print for S250 tube Power Amplifier. (Parts Kit K-103.)

BP-105

Full Size Assembly and Wiring Blue Print for Five Tube Shield Grid Regenerative Receiver. (Parts Kit SG-105.)

BP-108

Full Size Assembly and Wiring Blue Print for Six Tube all Electric TRF Receiver. (Parts Kit K-108.)

BP-39568

ABC Power Supply
Data Blue Print

For weeks past, draftsmen in the RADIO DESIGN laboratory have been making full size assembly and wiring blue prints for receiver and amplifiers, described in RADIO DESIGN. They are full size, each print averaging 24 by 30 inches.

FOR ONLY 10c EACH YOU CAN NOW OBTAIN BLUE PRINTS THAT PREVIOUSLY SOLD FOR ONE DOLLAR. USE THE COUPON BELOW.

RADIO DESIGN PUBLISHING CO.
INCORPORATED
103 BROADWAY, BROOKLYN, NEW YORK

10

CENTS EACH

RADIO DESIGN PUBLISHING COMPANY, INC.
103-A BROADWAY, BROOKLYN, NEW YORK

Enclosed find for which send me blueprints checked below:

..... BP-101 BP-103 BP-105 BP-39568
..... BP-102 BP-104 BP-106

Name

Address

•• BOOKS ••

The radio experimenter or custom set builder who keeps up to date in the advancement of his profession is the man who takes best advantage of his opportunities—and he is not only the “authority” but usually the man who has money in the bank.

The books listed below can be promptly shipped and have been selected because of their technical merit and their timeliness in supplying accurate information about recent developments.

RADIO AMATEURS HANDBOOK..... \$1.00

By F. E. HANDY. This third revised handbook tells all about short wave transmitters and receivers. Entirely “how to make it.” The standard textbook of every amateur. 211 pages, over 200 illustrations.

THE RADIO MANUAL..... \$6.00

By G. E. STERLING and R. S. KRUSE. A most complete book on modern commercial radio communication. The one book worth two or three times its cost. Over 900 meaty pages and 1,000 photographs and drawings.

PRACTICAL TELEVISION \$3.75

By E. T. LARNER. One of the few really practical books on television, and a necessity for experimenters. 172 pages, 100 illustrations.

WIRELESS PICTURES AND TELEVISION.. \$2.50

By T. THORNE BAKER. With no hesitation “the second” important book on television. Historical review and details of present day successful systems. 188 pages, with many illustrations.

Order the books that you desire and inclose check or money order. Shipment will be made within ten hours (except on foreign books temporarily out of stock). You can not make a better investment.

RADIO DESIGN, PUBLISHING COMPANY, INC.
ONE HUNDRED THREE BROADWAY, BROOKLYN, NEW YORK

RADIO DESIGN

MAGAZINE OF CONSTRUCTION FOR STUDENTS & SET BUILDERS

KIMBALL HOUTON STARK, *Editor*

JOHN KAUL, *Associate Editor*

JOHN GELOSO, *Technical Consultant*

Vol. I

CONTENTS OF THIS ISSUE

No. 4

EDITORIAL	73
THE PILOT SG-105 SCREEN GRID REGENERATIVE RECEIVER	75
<i>By John Geloso</i>	
THE K-108 TUNED RADIO FREQUENCY RECEIVER	83
<i>By John Kaul</i>	
RADIO PHYSICS COURSE	91
<i>By Alfred A. Ghirardi</i>	
THE PILOTONE ELECTRIC RECEIVER	101
<i>By Frank T. Sullivan</i>	
AUDIO FREQUENCY TRANSFORMERS.....	109
<i>By Kimball Houton Stark</i>	
USING MODERN ABC POWER SUPPLY UNITS.....	116
<i>By the Laboratory Engineers</i>	
"ONE-SEVENTY-ONE" AMPLIFIER AND POWER SUPPLY.....	120
<i>By the Laboratory Engineers</i>	
THE AIRPLANE RADIO BEACON.....	125
<i>By Zeh Bouck</i>	
THE PILOTONE "B" POWER SUPPLY UNIT.....	128
<i>By the Laboratory Engineers</i>	
HAIL TO THE GRAFF —EPPELIN.....	130
<i>By Zeh Bouck</i>	
PILOT DEMONSTRATES TELEVISION.....	133
<i>By Kimball Houton Stark</i>	

RADIO DESIGN MAGAZINE IS PUBLISHED BY
RADIO DESIGN PUBLISHING CO., INC., 103 BROADWAY, BROOKLYN, N. Y.

Radio Design Magazine is published quarterly or four times during the year. Subscription price is 50 cents for the four issues in the United States and possessions and in all foreign countries. U. S. coin as well as U. S. stamps accepted. Checks and money orders should be drawn to the order of Radio Design Publishing Co., Inc. Subscriptions are always started with the current issue.

The contents of this magazine are copyrighted and must not be reproduced in the United States without giving full credit to the publication. Translation into foreign languages must not be made unless permission is obtained.

CHANGE OF ADDRESS: PLEASE NOTIFY AS FAR IN ADVANCE AS POSSIBLE.
WRITE OR PRINT NAME AND ADDRESS CLEARLY TO AVOID MISTAKES.

This Pilot Moisture-Pruf Transformer was taken from stock, immersed in a beaker of water for one entire week. Then it was wiped dry, installed in a receiver and worked just as beautifully as ever!

Entirely Unaffected
by Immersion
in Water!



ALL TYPES
Made in 2 to 1 and 3½ to 1 ratio Audio Transformers, Output Filter and Output Transformers, "B" Power Supply Chokes and Push-Pull Transformers for power amplifiers to operate dynamic speakers.

PILOT'S New Family of Moisture-Pruf Transformers

Efficiency-destroying moisture can never lower the performance of these new-type transformers . . . Wound on our own machines, impregnated by Pilot's special vacuum process, encased in genuine bakelite, molded in our own presses—every step is under the vigilant control of practical radio engineers in the world's largest radio parts plant!

PILOT ELECTRIC M'FG. CO.
323 BERRY ST.  **BROOKLYN, N.Y. INC.**
TRADE MARK REGISTERED
"WORLD'S LARGEST RADIO PARTS PLANT"
RADIO PARTS BUILDERS
SINCE 1908

RADIO DESIGN

MAGAZINE OF CONSTRUCTION FOR STUDENTS & SET BUILDERS

EDITORIAL

WITH this Volume I, No. 4, RADIO DESIGN ends its first year. In the past twelve months the contents of the publication has so pleased its readers that today RADIO DESIGN has approximately twenty-three thousand paid subscribers and a sale over the counters of radio dealers throughout the United States of some odd thirty thousand, the total circulation being well over fifty thousand copies.

Of the print order of fifty-three thousand copies of Vol. 1 No. 3 absolutely no copies are left and there has been and will be no dealer returns.

Every copy of RADIO DESIGN is in the hands of radio experimenters and set builders and letters are being received from day to day asking, "Where can I obtain back copies of the magazine?" and "Here's my half dollar. I saw your advertisement in the last issue and don't want to miss RADIO DESIGN for the coming year."

RADIO DESIGN

engineers will be pleased to answer the technical radio questions of RADIO DESIGN readers at no cost.

The publishers of RADIO DESIGN appreciate your past confidences and desire me to express their obligations to you. I am also to tell you of future plans and how these plans are today being executed, to make RADIO DESIGN even more a "necessity" to you during the year 1929.

AN APOLOGY AND A PROMISE

First, however, I desire, in the name of the publishers and in my own name, to personally apologize to every RADIO DESIGN reader who may in the past have written to us asking technical questions, ordered books, or blue-prints, or to those who may have not received promptly, copies of the magazine.

We have done our best to keep right "down-to-the-minute" with all correspondence, shipment of book orders, as well as in the mailing of individual copies, but the terrific speed with which our circulation has increased and the necessity for an every-

RADIO DESIGN

has the second largest paid circulation of any radio magazine in the United States.

day expansion of facilities, temporarily was too much for us and it was impossible during the past few weeks to treat all of our good friends as courteously and as promptly as has been our ideal.

We promise in the future to be more prompt and courteous to you. Now I wish to tell you of our today and our future.

THE SIZE OF THE MAGAZINE WILL BE INCREASED

Beginning with Vol. 2 No. 1, the page size of RADIO DESIGN will be increased to a seven and one-half inch by ten inch print page, overall dimensions being eight and one-half by eleven and three-quarter inches, or the same size as Radio News and Radio Broadcast. This increase in size will enable us to use larger photographs and drawings and to eliminate the necessity of running illustrations lengthwise of the pages, all leading to making the magazine more easy to read and of more service to you.

With the beginning of the new year and with the first issue of the new size, the RADIO DESIGN subscription price will be increased from twenty-five cents to fifty cents for four issues.

RADIO DESIGN

full size blue-prints for practically all published receivers, amplifiers, etc., will be available at a cost of

TEN CENTS EACH

We feel that this increase in price is even more than justified for RADIO DESIGN in the future, I am sure, will be much more valuable to you than it has in the past and that you even would be willing to pay three or four times this fifty cents to be sure of securing every copy published.

RADIO DESIGN

will increase its print page size to seven and one-half inches by ten inches with the next issue.

RADIO DESIGN BLUEPRINT SERVICE

In addition to the drawings and photographs in the magazine, RADIO DESIGN will, in the future, supply full size assembly and wiring blueprints of practically all equipment, radio receivers and amplifiers described in the magazine.

The blue-prints averaging twenty-four inches by thirty-six inches in size will be available at a cost of only ten cents each. These blue-prints will be the work of expert draftsmen, designed to be legible and to give construction, assembly and wiring information.

RADIO DESIGN TECHNICAL QUESTION SERVICE

The technical staff of the magazine have organized themselves and will in the future be available to every reader for consultation and for answering any and all technical radio questions, at no cost other than a two cent stamped, and addressed envelope.

Questions should be numbered and accompanied whenever possible by illustrations or drawings of the particular circuits or apparatus about which you desire information. All enclosures of this kind will be returned with complete and correct answers.

Please be considerate, however, in regard to the number of questions and please do not ask us to supply you with drawings of circuit diagrams of special receivers or other apparatus.

RADIO DESIGN BOOK SERVICE

All future issues of the magazine will contain reviews of radio and allied technical books and bulletins.

The important radio books will be carried in stock and shipment will be made within a matter of hours after receipt of orders.

If you desire books which we may not at the moment have in stock they will be obtained for you at standard list prices and shipped immediately.

RADIO DESIGN LABORATORY

Paralleling the expansion of the office and publication facilities of the magazine, the laboratory floor space and equipment has been increased and men who have been familiar with technical radio developments

RADIO DESIGN

laboratory engineers and the publishers pass on every article before published, insuring correct information and economy in construction.

for years past have been added to the laboratory staff, enabling publication in the future of much added material both from a purely technical as well as from a constructional point of view.

As a matter of fact absolutely no piece of apparatus or equipment described in the magazine is considered worthy of publication until it has passed the rigid standards of the publishers from a commercial point of view, and the technical "yard-stick" of the radio engineers in the RADIO DESIGN laboratory.

The contents of the magazine will in the future, as in the past, not be confined to radio alone but will include many articles having to do with the development of allied arts including, aeronautical radio communication, sound film and record reproduction, and, not the least, television.

RADIO DESIGN

can supply you with any technical or radio book.

The Pilot flying radio laboratory will continue to carry on serious experimental work in cooperation with other radio laboratories and experimenters, along the lines of the work described by Mr. Zeh Bouck in his article in this issue, telling about tests made on the radio beacon system in collaboration with the Bureau of Standards.

SHAKE HANDS WITH YOUR EDITOR VIA THE MAIL BOX

And now in closing I certainly wish to tell you that I personally want to do my very best to make every future issue of the magazine interesting and instructive to you.

There will be no let up with the blue-pencil in an effort to obtain accuracy and dependability, that every statement may be technically correct.

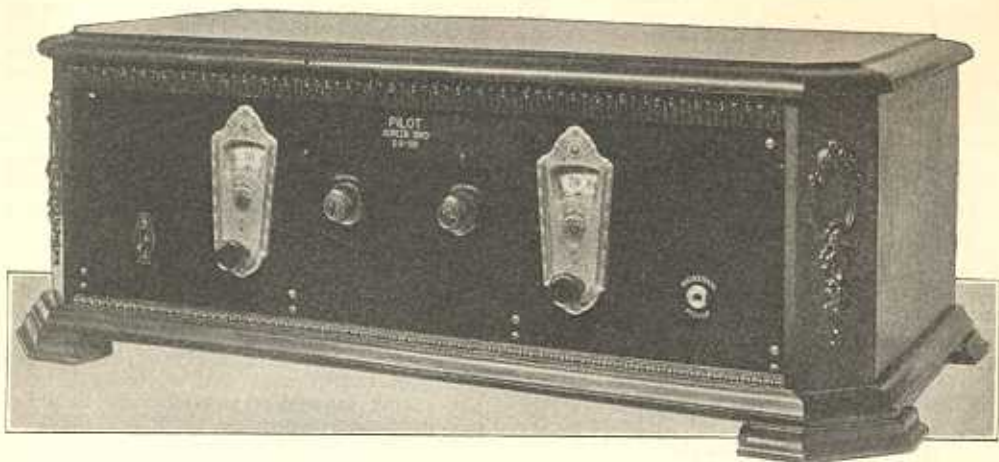
The contents of the magazine in the future depends upon both you and me. True, I have some ideas and I think them reasonable but I am certain that neither of us can make RADIO DESIGN what it should be, and in my belief the magazine that will benefit the radio industry, if we do not tell each other our desires and make our criticisms constructive.

Be frank with me, write to me, tell me whether you think a story is a good one or a bad one and why. Tell me your own experiences because I shall always be happy to tell you mine, as well as those of other experimenters and readers.

RADIO DESIGN HAS ONE IDEAL OF EXISTENCE, AND THAT IS TO BE IN REALITY THE FINEST RADIO CONSTRUCTION AND EXPERIMENTAL MAGAZINE IN THE UNITED STATES.

You men are on the "firing-line" as much or even more than I. Let's line up and "go-over-the-top," to radio success and happiness together.

KIMBALL HOUTON STARK, Editor.



THE PILOT SG-105 SCREEN GRID REGENERATIVE RECEIVER

By JOHN GELOSO

Chief Engineer, Pilot Electrical Mfg. Co., Inc.

THE meetings of the Institute of Radio Engineers in New York City provides in addition to its technical lectures and discussions an opportunity for the technical men of the industry to get away from their laboratories and to meet one another during the hours previous, to gathering at the Engineering Societies Building.

If one could take a census of various New York restaurants and hotels, on the evening of an Institute meeting, they would find groups of engineers and executives enthusiastically discussing, across dinner tables, the ways and means and problems of the industry, and sometimes solving some of them.

I had the pleasure recently of attending one of these "get-together" dinners just before a particularly interesting lecture was delivered before the Institute. At the table with me was the president of a large radio manufacturing company, his chief engineer and in addition a consulting radio engineer whose name is known and respected throughout the industry.

Our round table conversation centered around screen grid tubes, and the various circuits using these tubes recommended and published up to that time.

I shall not attempt to tell you the long details of our various opinions, but only my own conception which I stated to these men rather emphatically and with which they were in reasonable agreement.

It was my feeling that, as a general fact, screen grid tubes are all right, but my experience had indicated that the majority of troubles met with in using screen grid tubes had in the past been due to the design of circuits not particularly suited to the tubes themselves.

As soon as the tubes themselves were available, many experimenters used them in circuits, whereby three or four screen grid tubes were used as radio frequency amplifiers, and in both America and Europe efforts were made, and circuits were published, describing the use of screen grid tubes not only as radio frequency amplifiers, but also as detector tubes and as audio frequency amplifier tubes.

Manufacturers, in addition to the experimenters, attempted to capitalize on circuits employing the tubes, and did not hesitate to recommend two, three or four screen grid tubes in a given circuit.

In my opinion, one or two stages of radio frequency amplification in a circuit designed around the screen grid tube provides even more than the necessary selectivity and sensitivity required, and eliminates immediately any necessity for using a large number of tubes, with the possible disadvantage of added complications, both mechanically and electrically.

THE SG-105 USES AN AC SCREEN GRID TUBE.

To prove my contentions, to myself and to others, I designed the Pilot SG-105 all-electric five-tube screen grid regenerative receiver.

This receiver, after several weeks' test and actual use, has proven to me that the opinion that I stated to my friends was a reasonable one, and that opinion was "that a properly designed receiver circuit utilizing a single screen grid tube, would incorporate advantages over and beyond receivers then employing screen grid tubes and to such a degree that the receiver would represent a basic improvement in the art of radio broadcast reception.

As can be seen from the schematic circuit diagram of Fig. 1, the circuit arrangement

I wish to point out in particular at this time that the actual arrangement of the connection wires in the SG-105 receiver has been studied very carefully and only after several receivers were wired, was a circuit arrangement arrived at, that eliminated to the last degree all possibility of radio frequency feedback in various portions of the circuit, caused by circuit loops, length of radio frequency leads or the susceptibility of the circuit to a. c. "hum" pick-up.

PARTS REQUIRED FOR CONSTRUCTION

The complete list of all parts necessary for the construction of the SG-105 receiver (incorporating, of course, the ABC power supply) is as follows:

- 1 SG-105 Front Panel.
- 1 SG-105 Sub-panel.
- 1 1623 Variable Air Condenser.
- 1 1617 Variable Aid Condenser.
- 1 222-A Twin Coupler Shield Grid Ant. Coil.
- 1 174 Shield Grid Three Circuit Tuner.
- 2 1282 Illuminated Vernier Dials.
- 1 1165 Midget Jack.
- 1 42-W Bakelite Toggle Switch.
- 1 938 Pilot 200,000 Ohm Potentiometer.
- 1 398 ABC "Jumbo" Power Transformer.
- 1 381 Giant Audio Transformer.
- 1 399 Push-pull Input Transformer.
- 1 401 Push-pull Output Impedance.
- 1 396 "Jumbo" Filter Condenser Pack.
- 2 801 By-pass Condensers.
- 1 53 Mica Condenser.
- 1 51 Grid Condenser with grid leak and clips.
- 4 59 Mica Condensers.
- 1 395 "Jumbo" Double Choke.
- 1 960 Fixed Resistor.
- 1 959 Fixed Resistor.
- 2 956 Fixed Resistor.
- 3 216 Sub-panel Sockets.
- 4 217 Sub-panel Sockets.
- 4 35 Sub-panel Brackets.
- 1 each Binding Posts, Ant., Gnd., Short Ant., L. S. + L. S. —.
- 744 Miscellaneous Hardware.
- 1 BP-108 Blue Print.

ASSEMBLY INSTRUCTIONS

It is best in assembling the receiver to first mount all parts on the 23" by 7" bakelite sub-panel.

The position of these parts looking down on the top of the receiver is indicated by the drawing of Fig. 2, and the photograph Fig. 3. Looking from the receiver front it will be seen that above the sub-panel and at the rear left hand end of the sub-base panel is mounted the No. 398 power transformer, No. 396 filter condenser block, and the No. 395 double choke coil. Then going toward the right, comes the No. 401 output push-pull impedance, two tube sockets, and the No. 399 input push-pull transformer, and then another socket.

The grid condenser and leak, the No. 960 resistor strip, four other sockets, five binding posts, and the No. 381 audio transformer is also mounted on the top of the sub-base panel. Looking from the receiver front, the socket on the extreme left at the front is for the UX-280 full wave rectifier tube, while the socket just back of the volume control potentiometer and to the right of the left hand

variable condenser is for the Twin Coupler screen grid antenna circuit tuning coil.

Fig. 4 is a bottom view line drawing of the receiver sub-base panel, the same view being shown photographically in Fig. 5 and shows that under the sub-panel is mounted the fixed by-pass condensers and the three fixed resistors for the grid bias circuits.

Looking at the receiver front panel as shown by the illustration at the heading of this article (which shows the receiver mounted in a cabinet), we see that the "on" and "off" switch is mounted at the lower left hand corner of the panel and the phonograph pick-up jack in the lower right hand corner.

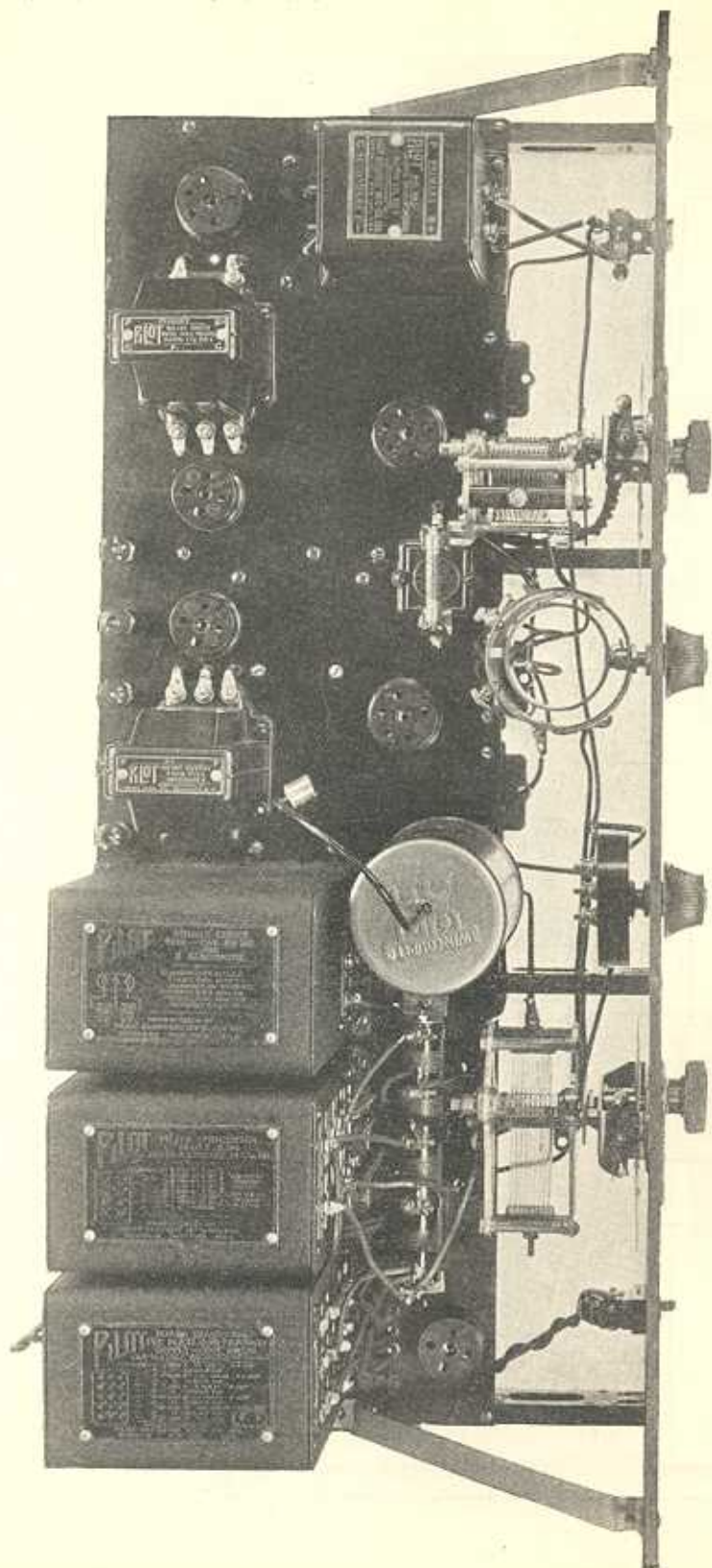
Between the two vernier dial controls are mounted two additional knobs, the one on the left being a volume control (the 200,000 ohm potentiometer), the one on the right being the distance (or the regeneration) control. The photograph referred to illustrates the SG-105 receiver mounted in a Corbett cabinet, making a very fine appearance. All of the parts which are shown in this front panel illustration are, of course, mounted directly on the front panel as is evident by the drawings of Fig. 2 and Figs. 4 and the photographs of Fig. 3 and Fig. 5.

It is best to mount all of the parts underneath the sub-panel first, for some of the resistors and fixed condensers screw heads and nuts will be underneath the "jumbo" power transformer, filter condenser, and choke coils when these units are assembled in place on top of the sub-base panel.

After assembling, all parts on the sub-base panel, wire up the filament circuit connections to all tubes, twisting the wires to reduce possible a. c. current "hum" pick-up. I must again emphasize the necessity of keeping all wires in exactly the positions shown on the drawings and photographs shown here, and in detail on the full assembly and wiring blueprint No. BP-105. After the sub-base panel has been wired complete, the front panel can be attached to the sub-base panel by screwing the front panel up against the ends of the four No. 35 bakelite panel brackets, and in addition by the two nickel-plated bracket supports at each end of the receiver.

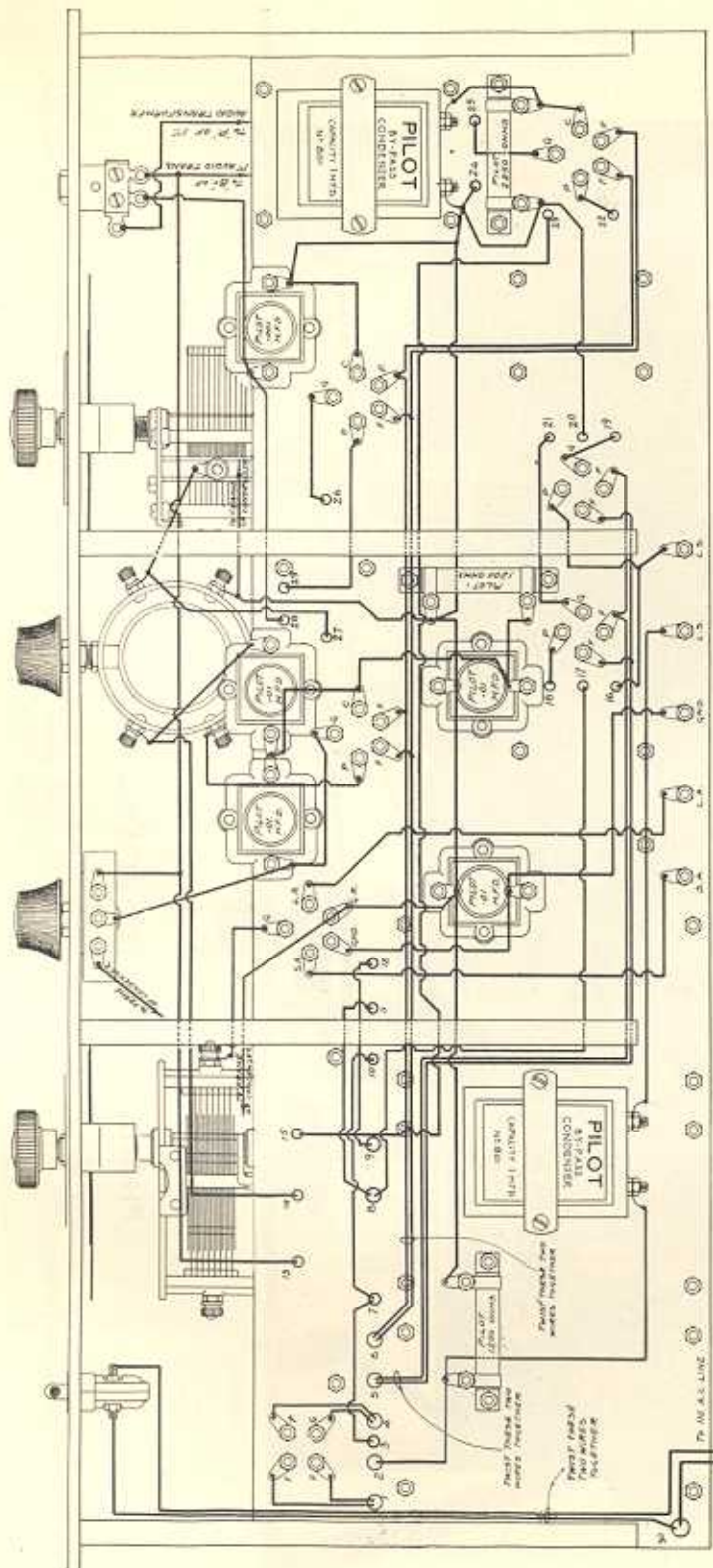
The wiring for the vernier dial lamps, although not shown in the drawings of Figs. 2 and 4 or on the schematic wiring diagram of Fig. 1, should be connected in parallel with the UX-171A five-volt filament circuit (preferably at the No. 398 power transformer terminals Nos. 1 and 9). In wiring the No. 398, power transformer, No. 396 condenser block and No. 395 choke coils, it will be noted that all terminals are numbered and that this numbering is likewise shown in the schematic and picture diagrams and on the large blueprint. Check this wiring over several times to make certain that you have all leads connected to their correct terminals and properly soldered.

I do not know that I have ever read an article telling how to construct a radio receiver, without pointing out with emphasis the necessity of using care in soldering. The two points that are important, are the use of a hot iron and of absolutely no flux or acid. Use only a resin-core solder.



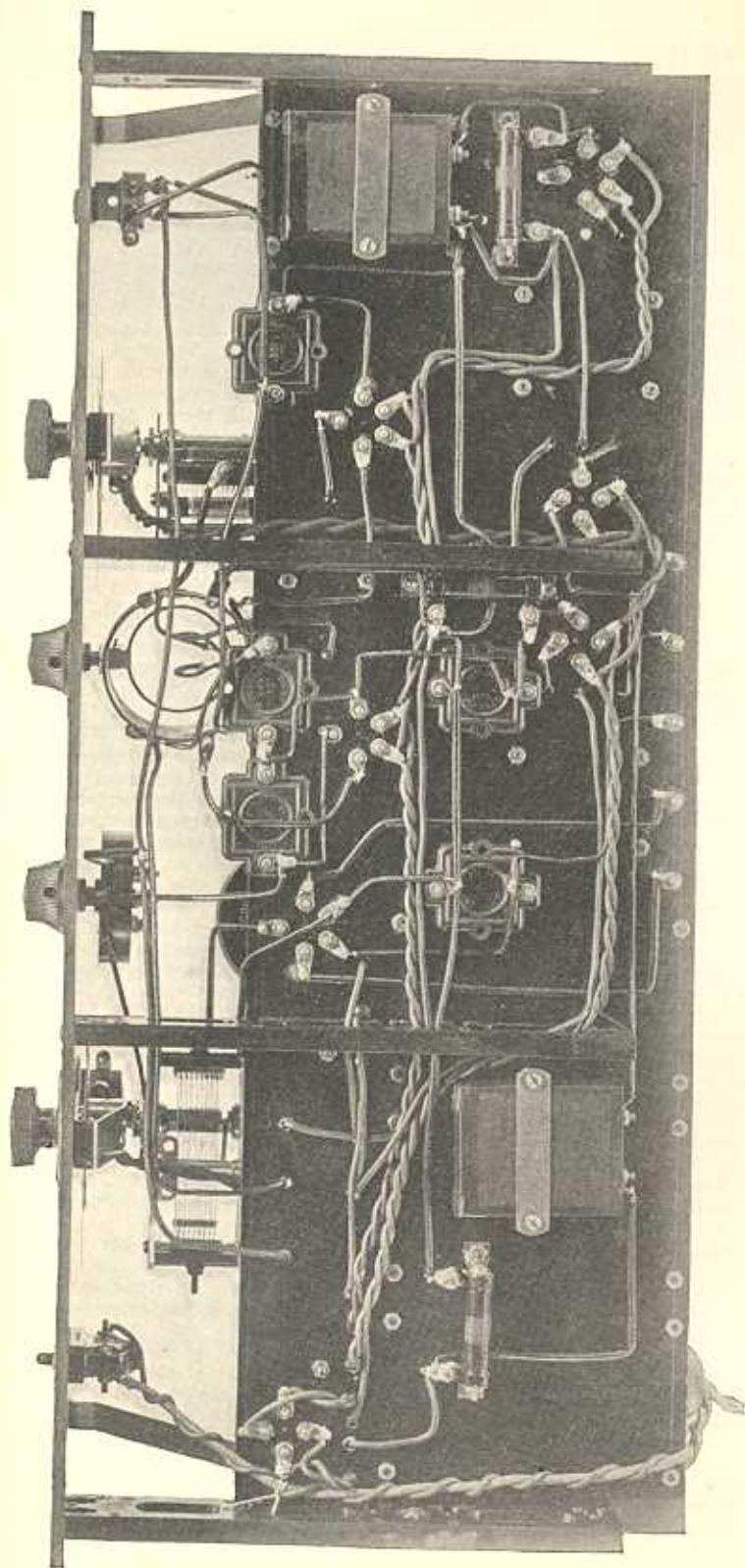
PHOTOGRAPH OF TOP OF ASSEMBLED SG-105 RECEIVER

Fig. 3. This photograph clearly shows the clean-cut appearance of the assembled and wired receiver. The use of the Pilot No. 398 power transformer, No. 395 choke coil, and the No. 396 filter condenser block, assembled at the left rear of the sub-base panel provides complete ABC power supply.



LINE DRAWING OF BOTTOM VIEW OF SG-105 RECEIVER

Fig. 4. This drawing should be studied very carefully before wiring the assembled receiver, for it shows in detail the location of all wiring underneath the sub-base panel.



PHOTOGRAPH OF BOTTOM OF SUB-BASE PANEL OF THE COMPLETED SG-105 RECEIVER

Fig. 5. This photograph illustrates the same view shown by the line drawing of Fig. 4 and clearly shows the details of all wiring. Note the twisted leads connecting all alternating current filament supply circuits.

TUBES REQUIRED

When you have finished wiring your receiver you are ready for the first test, and to every one who has ever assembled and wired a receiver for themselves, this is the moment that never lacks its thrill and its feeling of satisfaction in the "I have made a beautiful job of that receiver and I am proud of it." When you are all ready for the first test you will need the following tubes:

- 1 UY-222 a. c. screen grid tube
- 2 UY-227 a. c. tubes
- 2 UX-171A a. c. tubes
- 1 UX-280 full wave rectifier tube.

Fig. 2, in addition to the schematic diagram of Fig. 1, shows the proper sockets for each tube.

With the on-and-off switch at the extreme lower left hand end of the receiver panel in its "off" position and with the attachment plug attached to the 110 volt 60 cycle lighting circuit, we are ready to see "what happens."

Snap the on-and-off switch to the "on" position and if you have done a good wiring job and made all connections properly, all tubes of the receiver will light up without any attendant "fire-works."

Everything so good so far, and we can snap "off" the switch for a moment and attach the antenna and ground leads as well as the loud-speaker to the binding posts at the rear of the sub-panel, and set the distance knob or regeneration control so that the rotating coil is at right angles to the vertical coil or in position of minimum regeneration. Set the volume control as far as it will go toward the left.

Snap on the switch "on" again and after giving the tubes several minutes to heat up, slowly rotate the two vernier condenser dials throughout the broadcast range.

When you pick up a signal, tune it in carefully by rotating the vernier dial knobs slowly and for increased volume turn the potentiometer knob "volume" control to the right, as desired. For receiving distant stations or for selecting one station from another (through atmospheric disturbances, "man-made static" or because of interference between broadcasting stations themselves) adjust the regeneration or "distance" control knob so that the maximum signal strength with the desired quality is obtained without the set actually oscillating. The regeneration control will be found to be reasonably smooth in operation over the entire broadcast range, the signal strength increasing as more and more regeneration is added to the circuit, up until just previous to the time the set actually oscillates. Obviously care should be taken in adjusting the regeneration control, for with excess regeneration or with the set actually oscillating distortion will be introduced by the cutting of the side bands of the received signal.

The SG-105 receiver will be found to operate very satisfactory with the usual antenna available and in particular because of the sensitivity of the receiver due to the use of the

screen grid stage of tuned radio frequency amplification. A shorter antenna than usual or one having a length of only 40 or 50 feet may be used with fine results as regards reception of even distant stations, and, of course, the shorter antenna wire gives the receiver increased ability to separate one station from another when they are operating in nearly the same frequency channels.

THE SG-105 HAS A PHONOGRAPH PICK-UP JACK

Seemingly, the phonograph pick-up jack has taken the place of the now obsolete phone jack, and well it may be. Those of you who have phonographs either of today's design or of the vintage of ten years or so ago can obtain very fine phonograph record reproduction, using the new electrical cut records, a magnetic phonograph pick-up and the SG-105 receiver.

In the radio broadcasting studio the artist's voice or the music of an orchestra is converted into electrical energy and radiated into space to be received in your home with your SG-105 receiver. The receiver converts the electrical energy back into sound energy.

In the phonograph recording studio the artistry of the performer is recorded on a sound record as mechanical energy. When you bring that record into your home and play it on your usual phonograph you transform that mechanical sound record back into sound. When you play that same record on your phonograph which is equipped with an electrical pick-up device, the sound energy of the record is directly transformed back into electric energy. By plugging the pick-up connection leads into the phonograph pick-up jack on the front panel of your SG-105 receiver you use the audio frequency amplifier portion of the receiver to amplify the electrical energy from the pick-up and listen to the reproduced sound record through your regular radio loudspeaker.

I AM SURE THAT YOU WILL BE PLEASED WITH THE SG-105

Because I believe that the SG-105 receiver uses a screen grid tube at its optimum operating efficiency in combination with a circuit which allows high gain radio frequency amplification, extremely good selectivity and high quality over-all reproduction of speech and music, I am sure that you, too, will be pleased with its performance.

Certainly, we chaps who build our own receivers and amplifiers and who are able to utilize "last-minute-proven" circuit arrangements long before the regular manufacturers of factory-built receivers can use them—we should be in the forefront of radio design and be able to demonstrate the results of our work to our friends and make the truthful statement, that "This set that I have just finished represents the last word in radio."

I am sure, too, that after your friends have "listened-in" on your SG-105 and found out how little the parts cost, that they will also become SG-105 builders and enthusiasts.